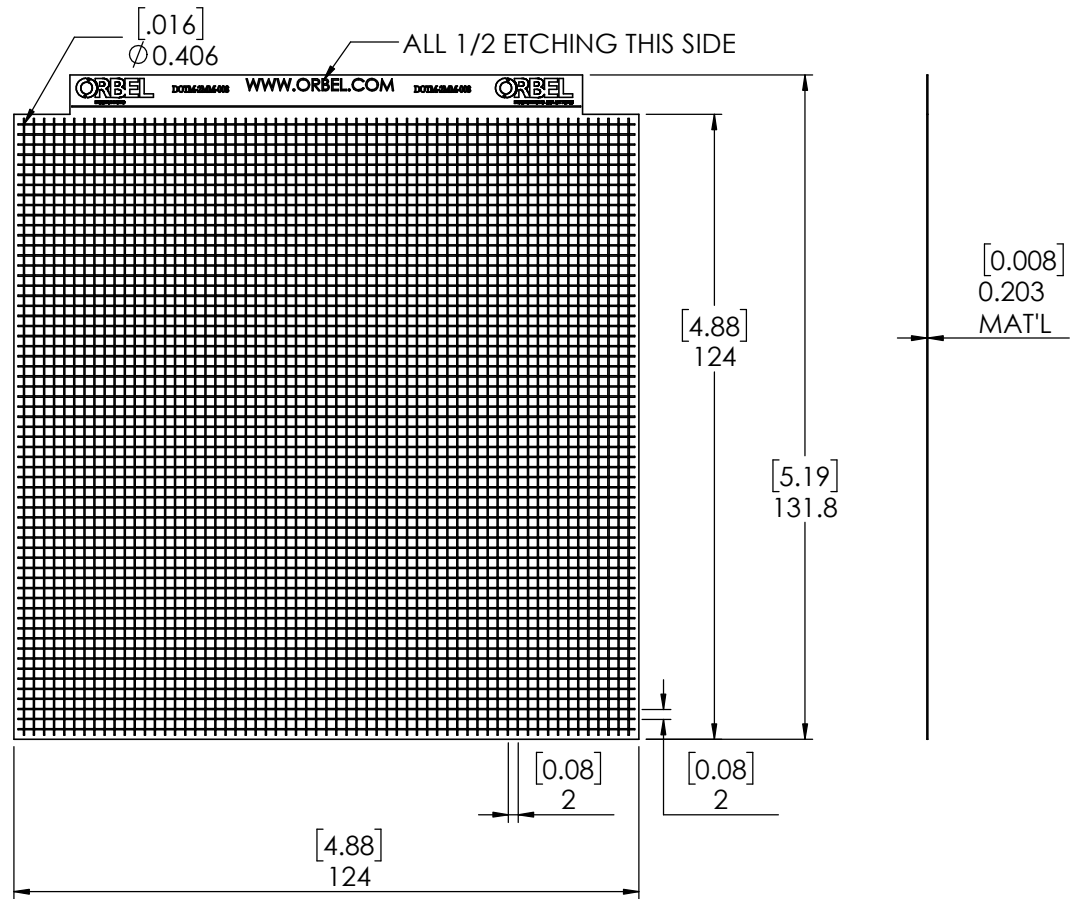


DIMENSIONS ARE IN MILLIMETERS [INCHES]



Orbel Confidential

RoHS Compliant

REF DWG. --

|   |             |         |  |              |      |  |
|---|-------------|---------|--|--------------|------|--|
| <p>THIRD ANGLE PROJECTION</p>   |             |         | <p>DIMENSIONS ARE IN INCHES<br/>TOLERANCES:<br/>FRACTIONAL ±<br/>ANGULAR: MACH ± 3 Degrees<br/>TWO PLACE DECIMAL ± .005<br/>THREE PLACE DECIMAL ± .003</p> | NAME         | DATE |  |
|   |             |         |  | DRAWN        | BEH  |  |
| <p><b>PROPRIETARY AND CONFIDENTIAL</b><br/>THE INFORMATION CONTAINED IN THIS DRAWING IS THE SOLE PROPERTY OF ORBEL CORPORATION. ANY REPRODUCTION IN PART OR AS A WHOLE WITHOUT THE WRITTEN PERMISSION OF ORBEL CORPORATION IS PROHIBITED.</p> |             |         |  | CHECKED      |      |  |
|   |             |         |  | ENG APPR.    |      |  |
|   |             |         |  | MFG APPR.    |      |  |
|   |             |         |  | Q.A.         |      |  |
|   |             |         |  | COMMENTS:    |      |  |
|   | NEXT ASSY   | USED ON | FINISH   | ORBEL METRIC |      | <p>SIZE <b>A</b></p> <p>DWG NO. DotM-2MM-008</p> <p>SCALE: 2:3</p> |
|   | APPLICATION |         | DO NOT SCALE DRAWING   |              |      | <p>REV. <b>01</b></p> <p>WEIGHT:</p> <p>SHEET 1 OF 1</p>           |



## EZ-Matrixx Board Level Shielding

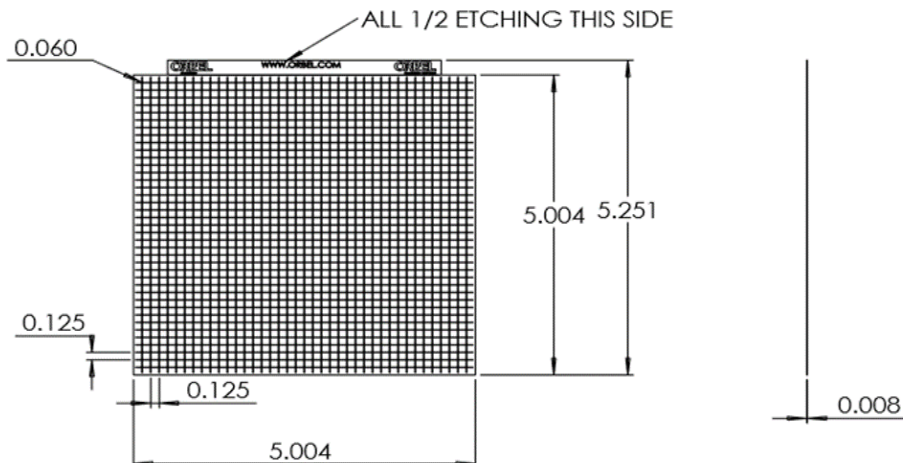
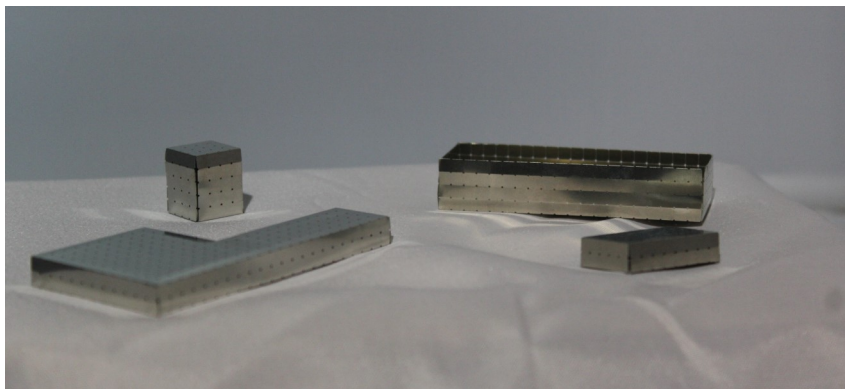
### EZ-MATRIXx FEATURES:

- Alloy 770 Nickel Silver
- Imperial Sizes:  
5.004" x 5.004"  
With 0.125" spacing
- Metric Sizes:  
124mm X 124mm  
With 2mm spacing
- EZ-Bend Form Lines
- Precision Ventilation Holes
- Quick Prototyping Solution.
- RoHS Compliant
- Available through Distribution

Orbel, the recognized leader in standard and custom Board Level Shielding, is offering the EZ-Matrixx EMI Shield.

The EZ-Matrixx is the best way to prototype your next PCB Shield. It can be readily and easily formed into a square or rectangular RF board shield to match almost any profile. The EZ-Matrixx has the flexibility of a foil, and the sturdiness of a shield.

Using a highly solderable Nickel Silver Alloy to produce the EZ-Matrixx. This choice in material makes the EZ-Matrixx ideal for anyone looking to quickly apply and test an RF board shield for an application.



Orbel Corporation

2 Danforth Drive, Easton  
PA

610-829-5000

AS9100 Rev.D/ISO  
9001:2008

[sales@orbel.com](mailto:sales@orbel.com)

[Orbel.com](http://Orbel.com)